

Annual performance report

Half year 2021 report



Co-financed by the Connecting Europe
Facility of the European Union

easier, faster, safer

Update on Corridor Traffic

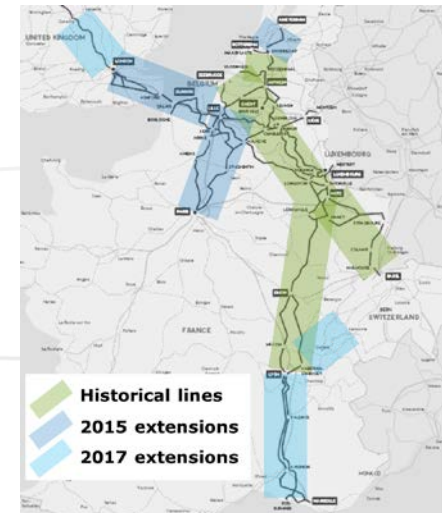
The following pages will provide insight into the trains running on the Corridor for the first 6 months of the present year.

The data used to calculate the given KPIs and OMs, come from the national IM databases and the international TIS database, managed by RNE. More details are given per KPI or OM.

Where available, information is provided on the main causes of the evolutions displayed.

The graphs illustrating the KPI show in 3 colors the evolution of the lines of the corridor.

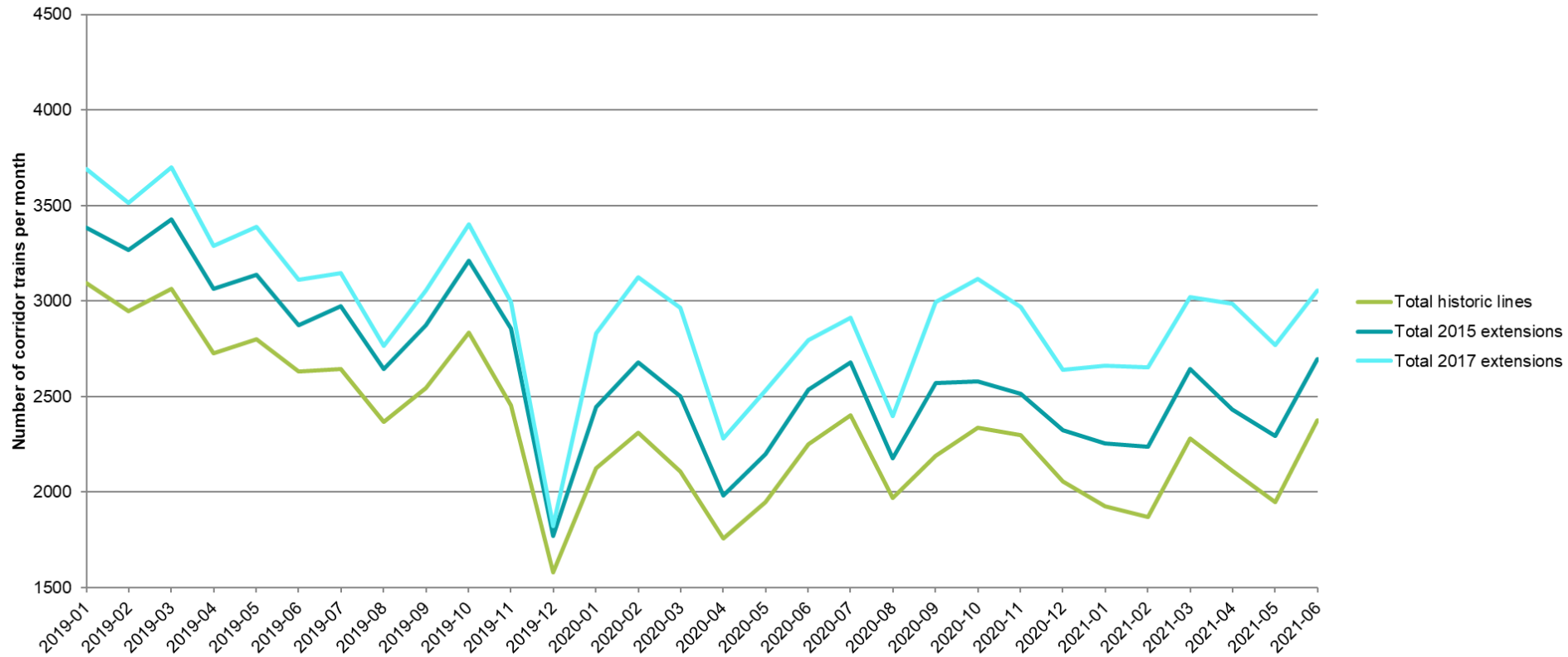
The historical lines, then the 2 extensions of 2015 and 2017.



easier, faster, safer

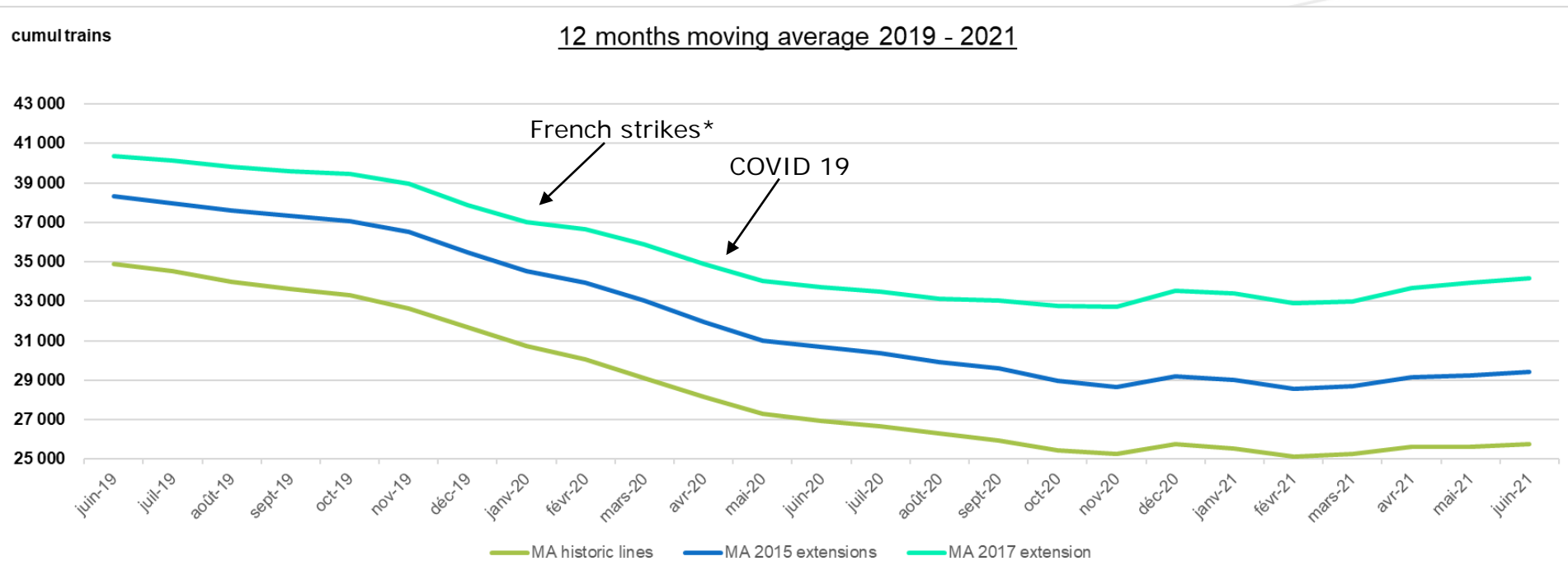
KPI 01 – RFC Traffic Volume

January 2019 to June 2021



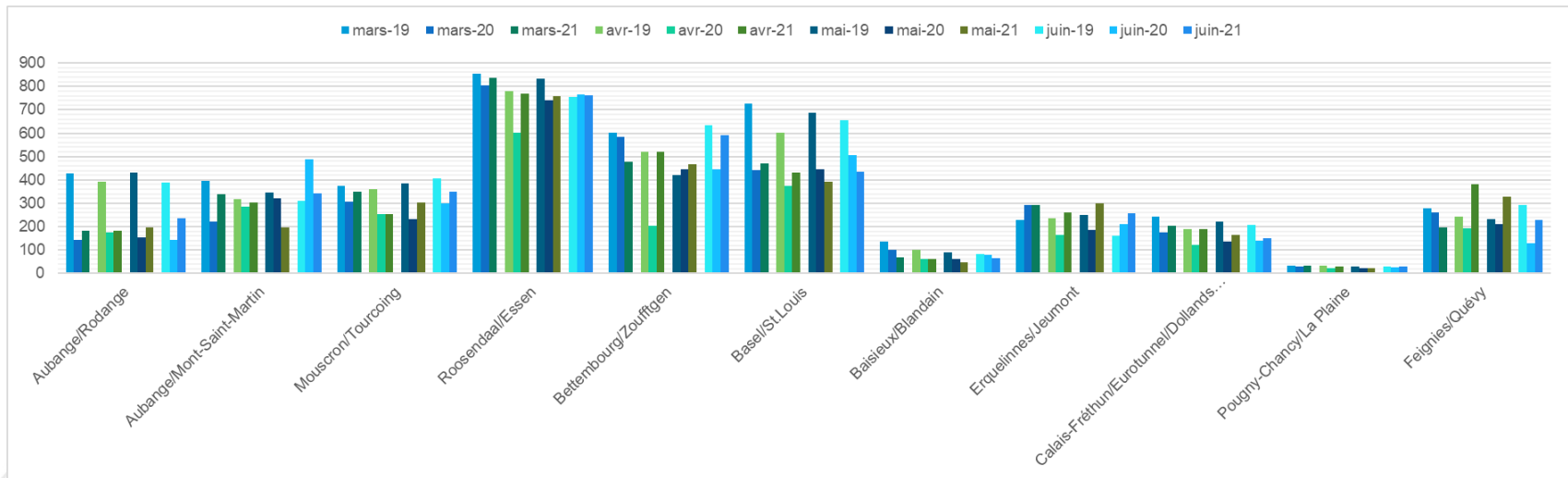
KPI 01 – RFC Traffic Volume

The moving average is displayed to smooth out short-term fluctuations and highlight longer-term trends or cycles. Each figure shows the number of train runs during the last 12 months preceding the last day of the given month.



* With impact on border points BE LU CH, and night closure

Total amount of trains per corridor border points COVID



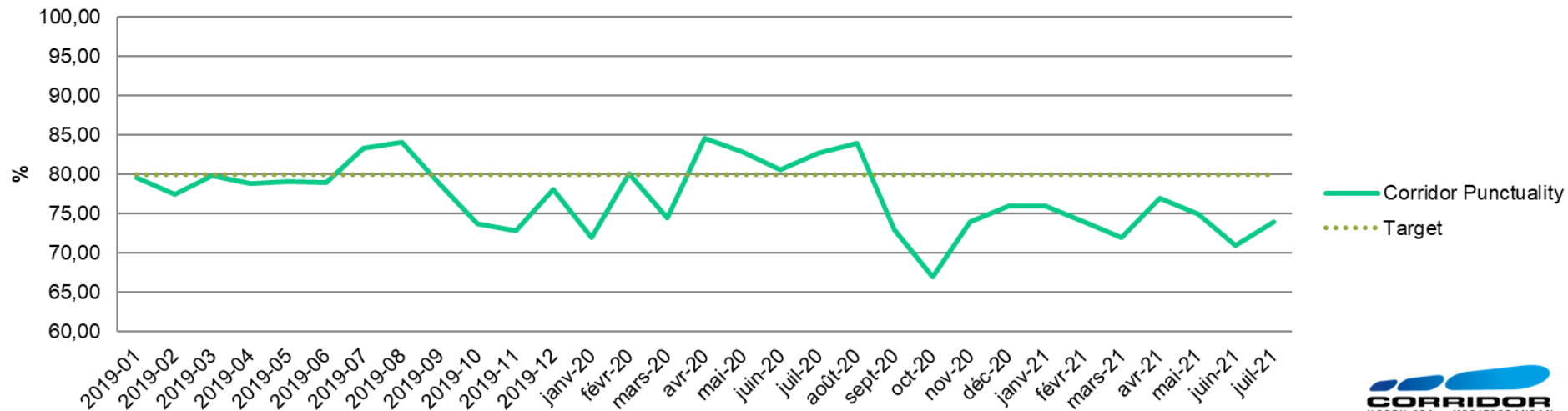
The Covid dropped volumes in the corridor by 25% in total.

Volumes have recovered but are not back to 2019 levels.

% trains whole corridor	2020/ 2019	2021/ 2020
March	-22	+3
April	-35	+38
May	-25	+8
June	-18	+7

KPI 02 : Corridor Punctuality

Corridor Punctuality 2019 2021



Calculation based on OBI reports: 30-minute moving average over the corridor

The sole responsibility of this publication lies with the author.
The European Union is not responsible for any use that may be made of the information contained there in.

Contact

oss@rfc2.eu

www.rfc-northsea-med.eu

ProRail

INFRABEL
Right On Track

NetworkRail

SNCF
RÉSEAU



CFL



ACF

 **SBB CFF FFS**

trasse.ch
trasse | schweiz | ag
sillon | suisse | sa
traccia | svizzera | sa
swiss | train paths | ltd



Co-financed by the European Union
Connecting Europe Facility