

ATHUS

Terminal containers

Adaptation L165/3

RAG Meeting
RFC North Sea - Mediterranean

E. Thiry

January 31, 2018



Scope of the project

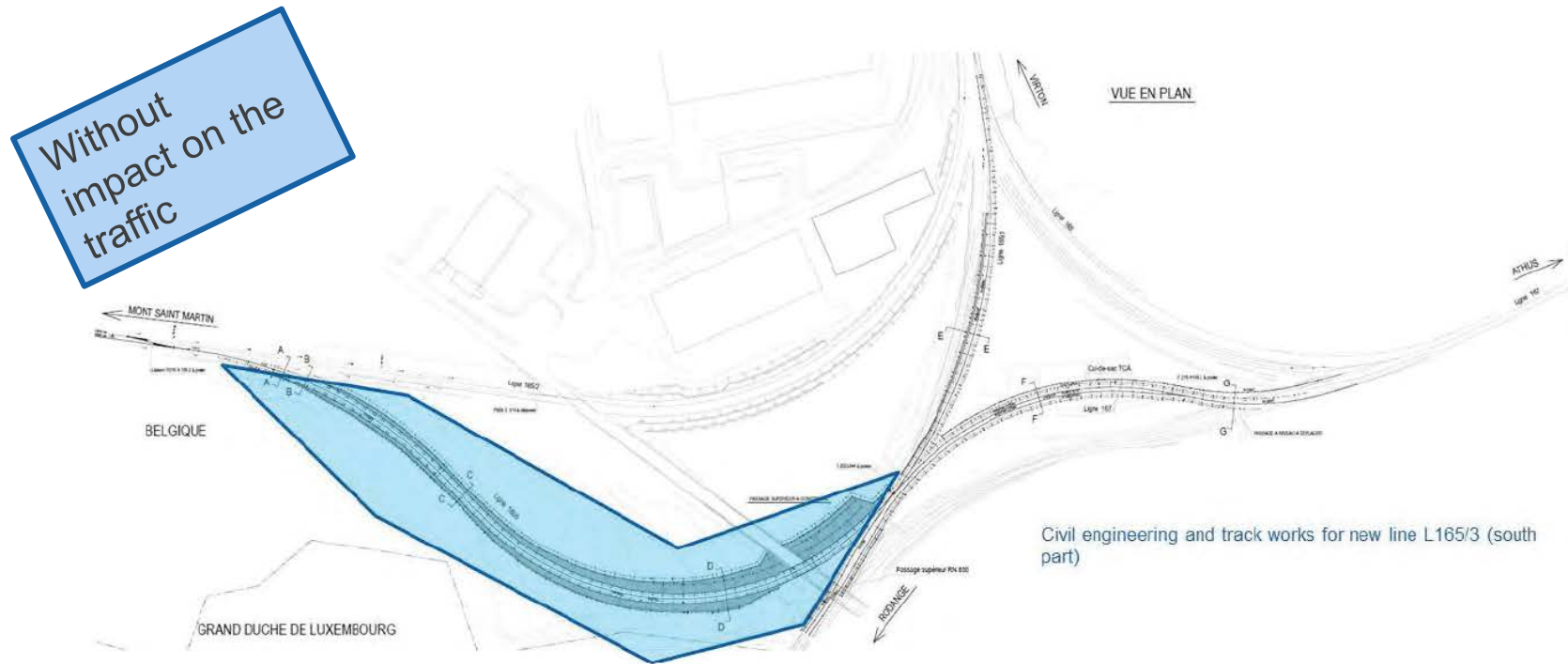
The station and the Terminal Containers of Athus connected to France



Scope of the project

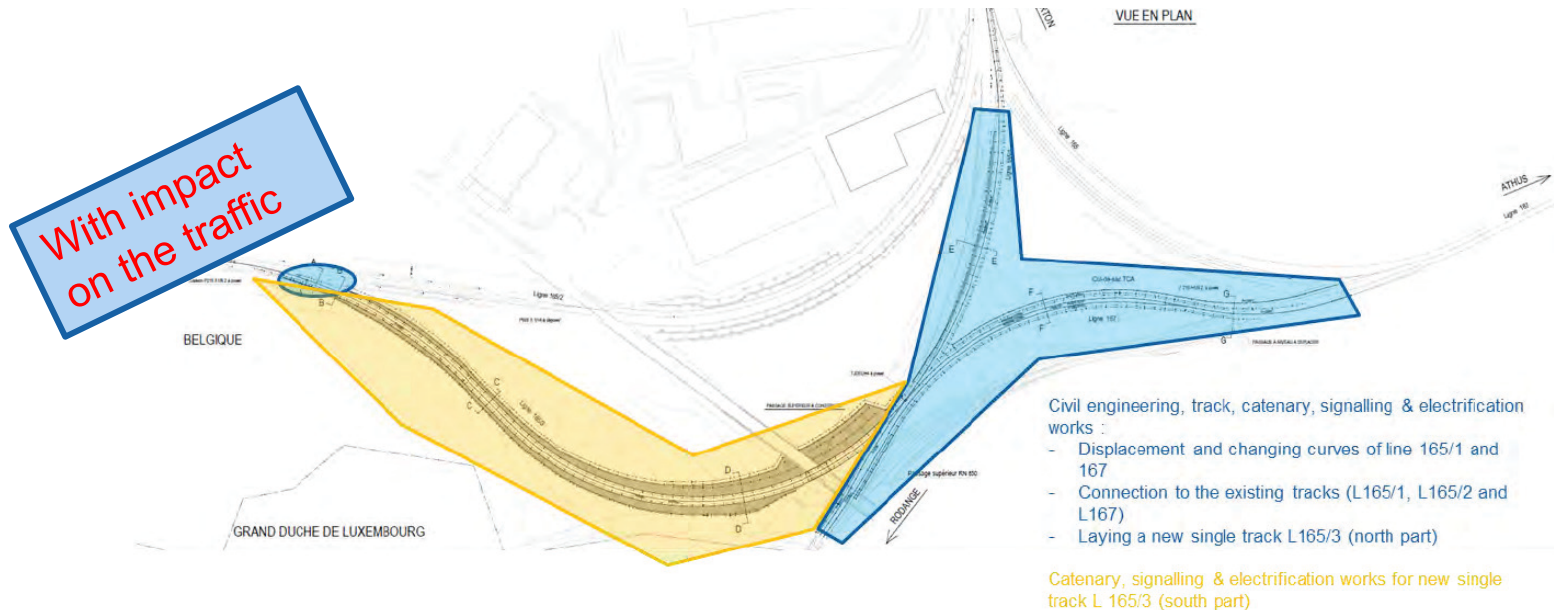
The creation of L165/3 to enable direct access to France from the station of Athus will be realised in 2 work phases

1. Phase 1 = Civil engineering and track works on the new line (L.165/3)



Scope of the project

2. Phase 2 = Civil engineering, track, catenary, signaling and electrification works : adaptation of the existing tracks



This project takes also the lengthening of 2 tracks to 750 m useful length in the station of Athus (tracks 10 and 11 of the bundle A) into account. This lengthening implies the displacement and renewal of the switches, adaptation of the catenary and signaling

Scope of the project – General planning

	Phase 2			
	2017	2018	2019	2020
Pre-studies – studies - tender				
Works				
	Passing tracks at Athus			
Pre-studies – studies - tender				
Works				

Agenda

- Scope of the project
- Presentation of the phases of the works
- Coordination between the IM's
- Determination of the rest capacity and adaptation of the train paths
- Next steps
- Other important works on RFC North Sea Mediterranean

Presentation of the work phases with impact on the traffic (detail of phase 2 of the project)

The document of phases published as soon as the plannings of the different IM's are coordinated and consolidated among themselves.

A first meeting occurred with the concerned IM's (SNCF Réseau, ACF/CFL, Infrabel) on 18 January.

A specific meeting will be organised afterwards.

Coordination among IM

The three IM's coordinate their work sites in order to leave an alternative route free during each phase.

- ACF/CFL already sent us the planning of the works at the station of Rodange.
- SNCF-Réseau will send us shortly the planning of the works with strong impact and also the planning of the generic windows (maintenance) for 2020. Section Longuyon - Mont-St-Martin and section Hagondange - Zoufftgen

Coordination among IM – Alternative routes

Case n°1 : Line 165/1 closed

Consequences:

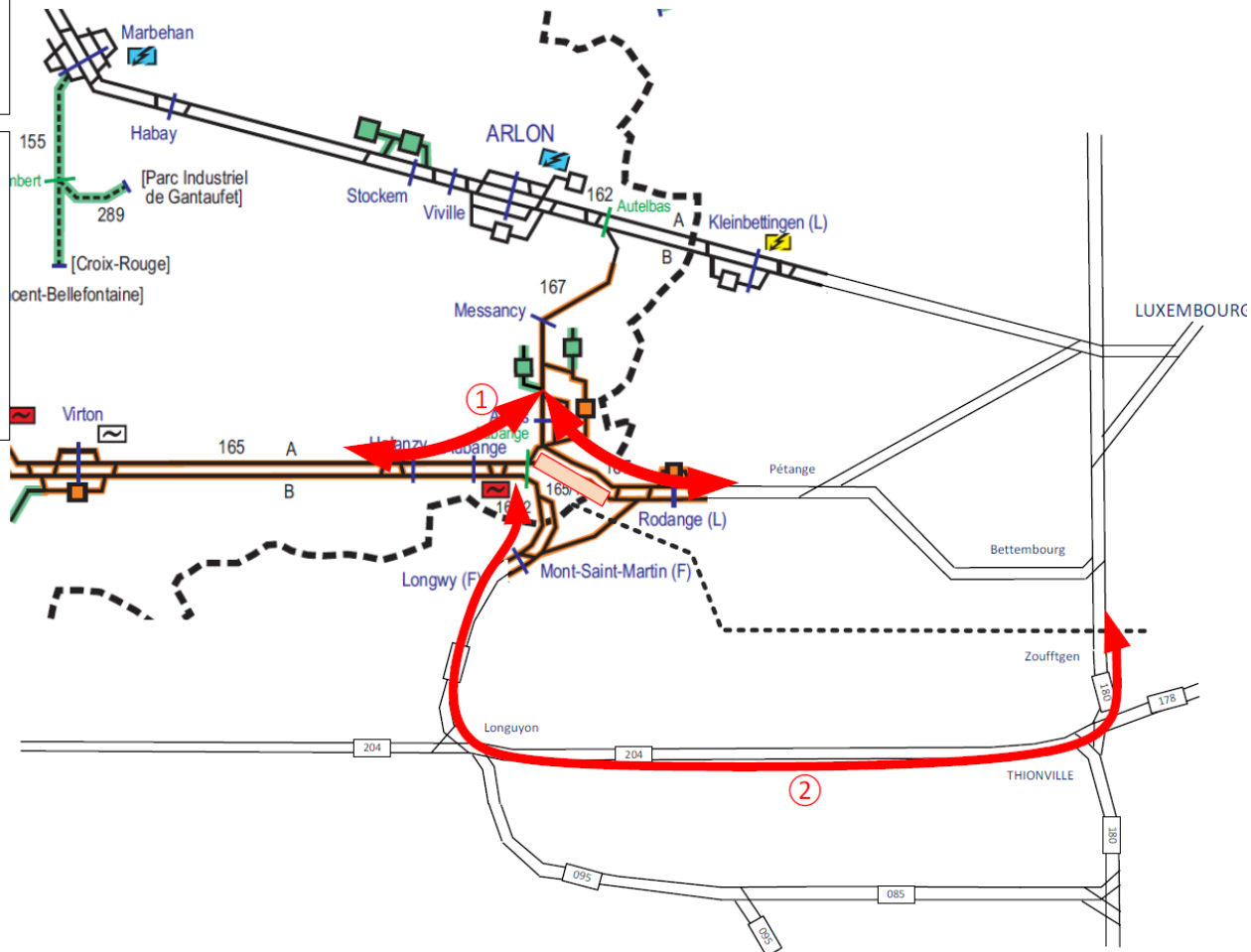
No traffic possible
between Rodange and
Aubange

Alternatives :

1. Front change in the
station of Athus

2. Re-routing through:

- Zoufftgen
- Thionville
- Longuyon
- Mont-Saint-Martin



Coordination among IM – Alternative routes

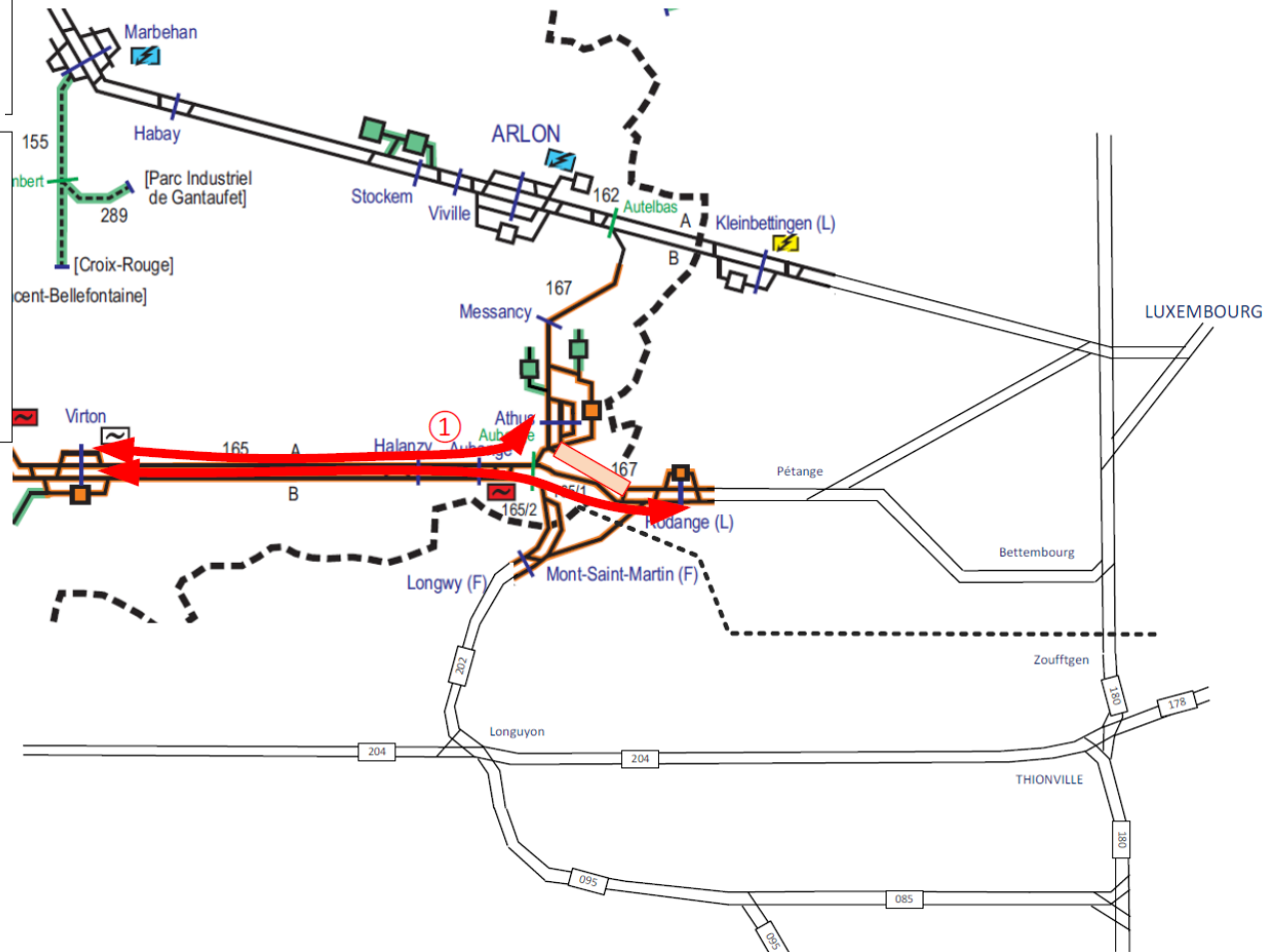
Case n°2 : Line 167 closed

Consequences:

No traffic possible
between Rodange and
Athus

Alternatives :

1. Front change in the station of Virton



Consequences:

Alternatives :

-

Coordination among IM – Alternative routes

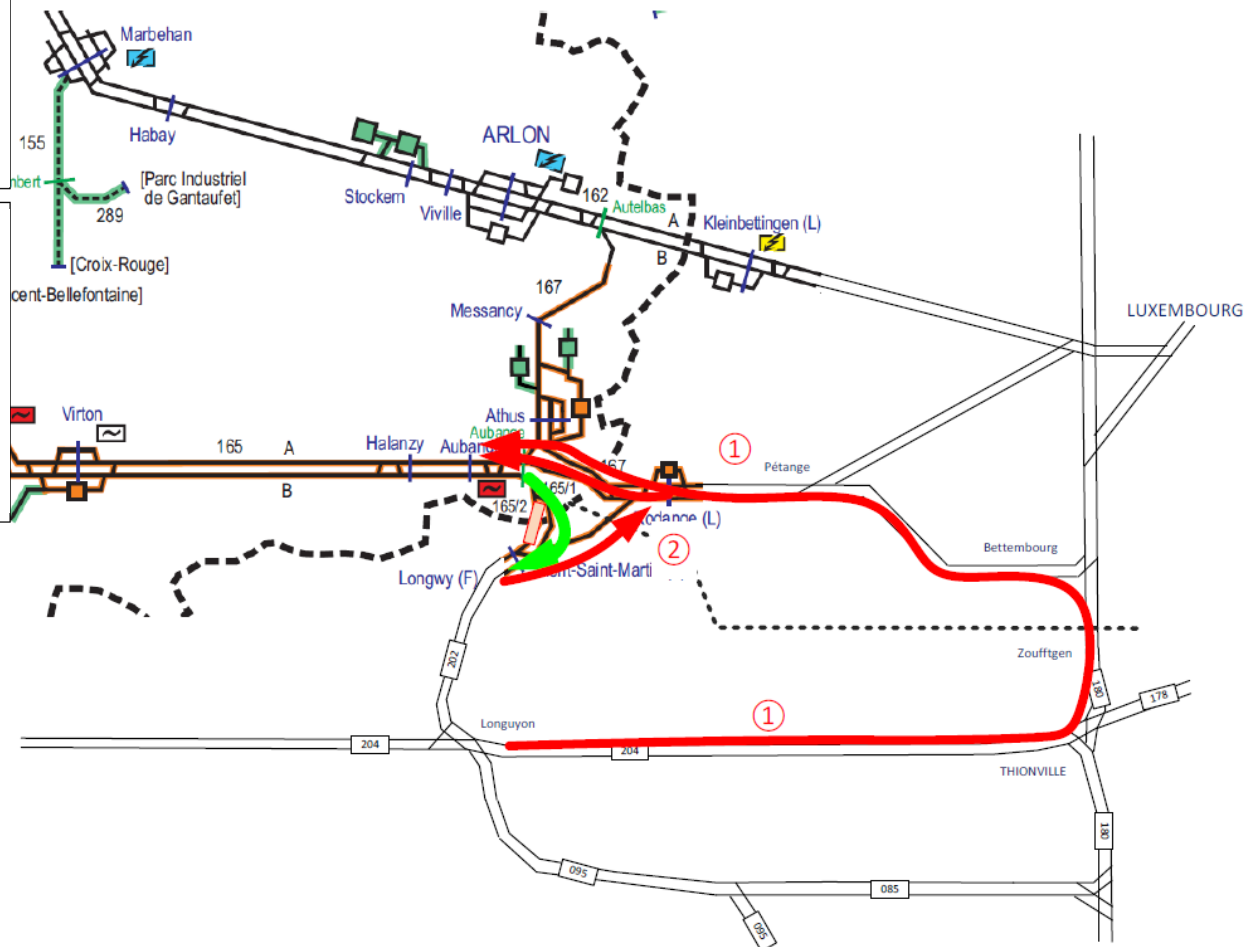
Case n°4 : Track B Line 165/2 closed

Consequences:

No traffic possible
between Mont-Saint-
Martin and Aubange
Traffic possible between
Aubange and Mont-
Saint-Martin

Alternatives :

1. Traffic South-North
rerouted through:
Thionville/Bettembourg/
Rodange
2. Traffic South-North
rerouted through:
Front change at
Rodange (! Reduced
capacity during works)



Determination of the rest capacity and adaptation of the train paths

The RFC2 agrees that Thomas Vanbeveren ensures the link between the responsible persons Timetabling of the three IM's :

ACF : Laurent Kass and Marc Neuens

SNCF-Réseau : Direction Circulations (Stéphane Legeay ?)

Infrabel : I-TMS.35 (Thierry Boudart)

This working group will determine the rest capacity on the alternative routes in function of the restrictions of works capacity and will take care of standardization of the train paths between the three networks.

After every meeting, the managers of the TCR will be informed.

1. Update of the phases of the work places in function of the different plannings.

Action : Infrabel-TMS.34 (Ph. Coinne) – Deadline : 15/02/18

2. First information to the railway undertakings concerned (RU's Freight, CFL-passengers, SNCB), including the service provider Sibelit.

→ Planning of the works / TCR

Action : Specific meeting to be planned by Infrabel-TMS.34 (Ph. Coinne) – Deadline : 1/03/18

3. Working group rest capacity / adaptation of the train paths

Action : RFC2 (Thomas Vanbeveren) / Infrabel-TMS.35 – Deadline : TBD

4. Second information to the RU concerned → Timetables / TTR

Action : Working group / Infrabel-TMS.35 – Deadline : TBD

At every step, the responsible(s) for the action will inform all the participants

Other important works on RFC North Sea Mediterranean

**Extract of the minutes of the semestrial information
meeting for the RU's of 14 November 2017**

Next meeting on 29 May 2018

List of the most important works – 2018/2019

- **Line 166** – Anseremme-Gendron – Cleaning, renewal of underpasses.
Service on single track from 15/01/18 till 09/12/18
- **Line 154** – Station of Dinant : simplification of the installations, removal of level crossing, construction of a corridor under the tracks, renewal of the platforms from 2/08/18 till 2/12/18.
- **Line 165** – Conversion of the station of Virton (switches and platforms) from 18/08/18 till 16/12/18 and from 21/01/19 till 17/03/19.

List of the most important works - 2019/2020

- **Line 166** – Anseremme-Gendron – Renewal of the underpasses, rock walls, tracks and different works.
Service on single track from 11/2/19 till 29/03/20
- **Line 165** – Renewal of the station of Bertrix (switches) from 24/03/19 till 7/07/19
- **Line 166** – Beauraing-Vonêche – Cleaning of the tracks
Service on single track from 30/04/20 till 5/06/20
- **Line 166** – Houyet-Beauraing – Repair of the support walls
Service on single track from 08/06/19 till 30/06/20