

Sharing of train tracking and Estimated Time of Arrival (ETA) information

CEF Action nr 2016-EU-TA-0185-S

The 12 ELETA intermodal trains



Co-financed by the European Union

Connecting Europe Facility

ELETA intermodal trains



Route	Train service
7	Antwerp (BE) – Busto Arsizio (IT) <ul style="list-style-type: none">- Route via <u>Chiasso</u>- Route via Domodossola- Route via <u>Spiez</u>
8	Rotterdam (NL) – Busto Arsizio (IT)



ELETA intermodal trains



Route	Train service
9	Ludwigshafen (DE) – Busto Arsizio (IT) - via Domodossola - via <u>Chiasso</u>
10	Rotterdam (NL) – Novara (IT) - Via Domodossola



ELETA intermodal trains



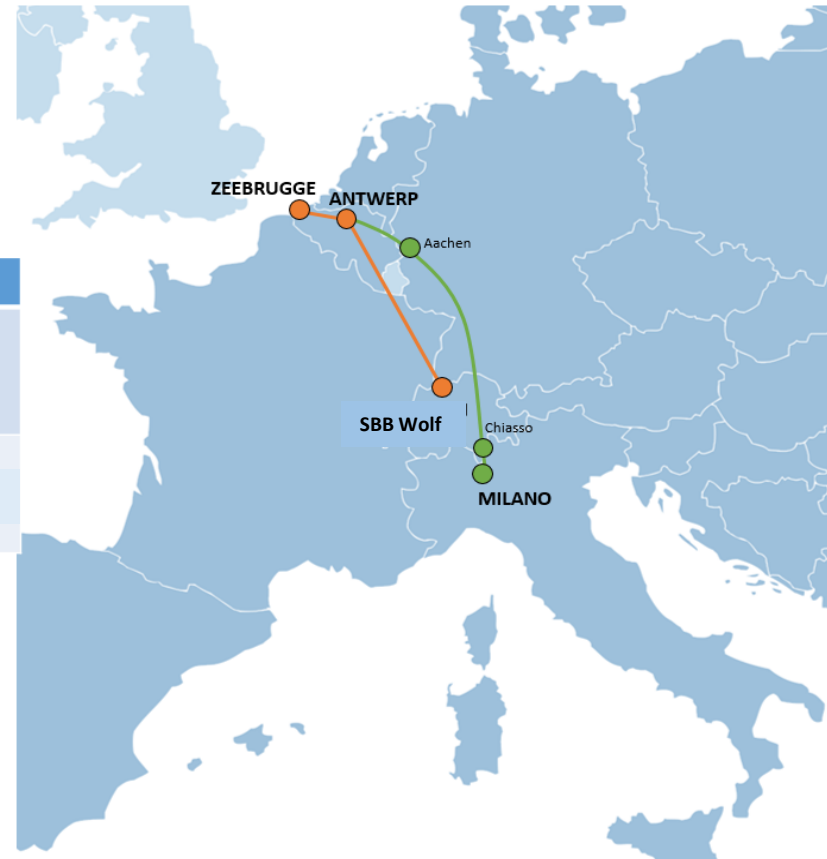
Route	Train service
1	Ludwigshafen (DE) – Barcelona (ES)
2	Köln (DE) – Verona (IT)



ELETA intermodal trains



Route	Train service
5	Antwerp (BE) – Milano <u>Segrate</u> (IT)
6	<u>Zeebrugge</u> /Antwerp (BE) – Basel SBB Wolf (CH)



ELETA intermodal trains



Route	Train service
3	Charleroi (BE) – Torino (IT)
4	Duisburg (DE) – <u>Pomezia</u> (IT)



ELETA intermodal trains



Rail Cargo Operator
Member of **ÖBB**

Route	Train service
11	Rotterdam (NL) – Wolfurt (AT)
12	Rotterdam (NL) – Linz (AT)

