

Easier, faster, safer

MVP Capacity Intelligence

First outcomes

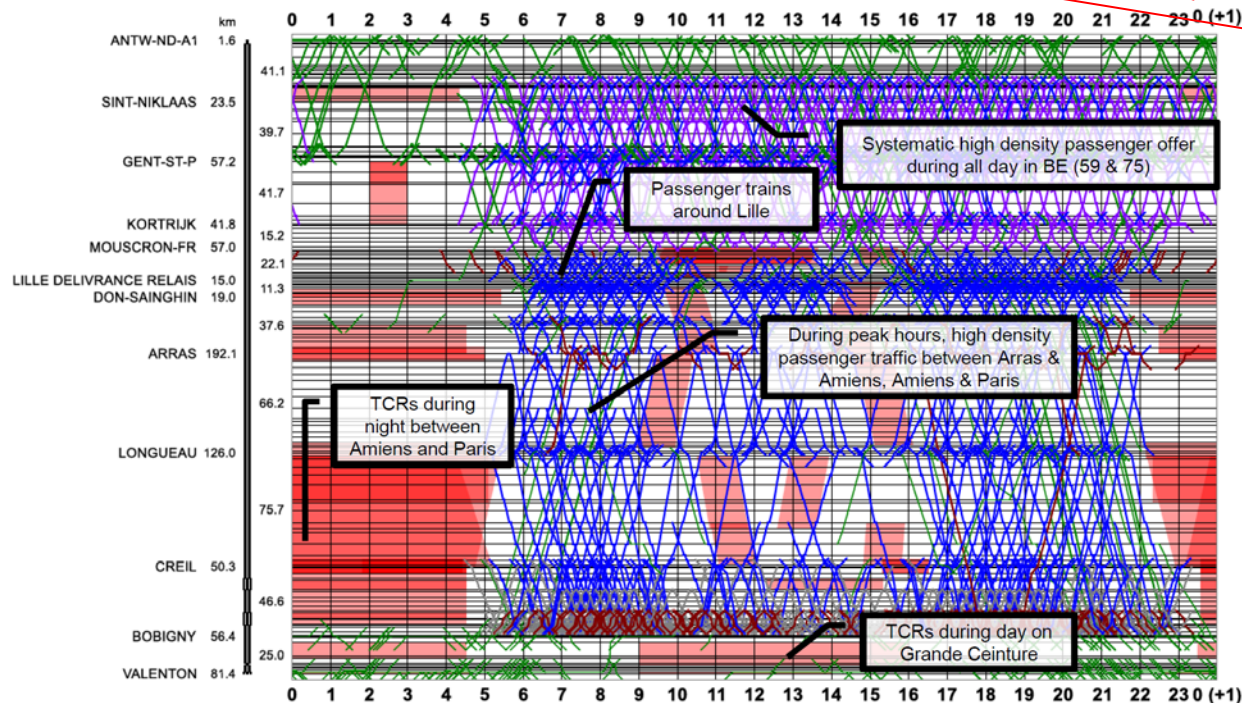
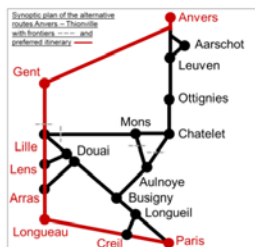
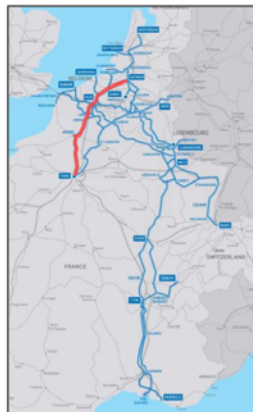
Common RAG RFC NSM & RALP – 18 October 2023

2.1

An illustration of the "General TT structure" of a route

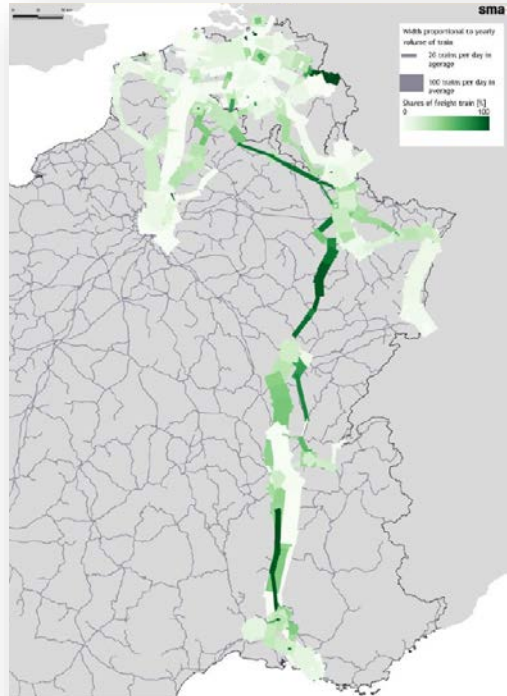
Working paper
Illustration to be
consolidated

15.09.2022

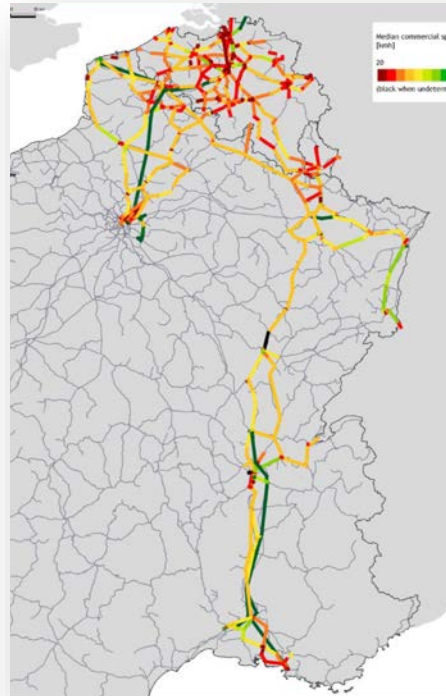


2.2 Some illustrations of the “network usage”

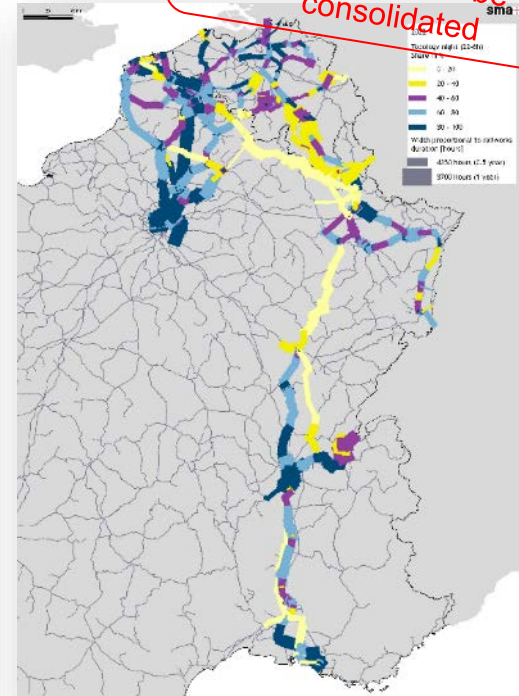
Working paper
Illustration to be
consolidated



Volume of trains
& proportion of freight traffic



Median commercial speed



TCRs – Volume
& Day/night organisation

2.3 Some illustrations of “Stability”

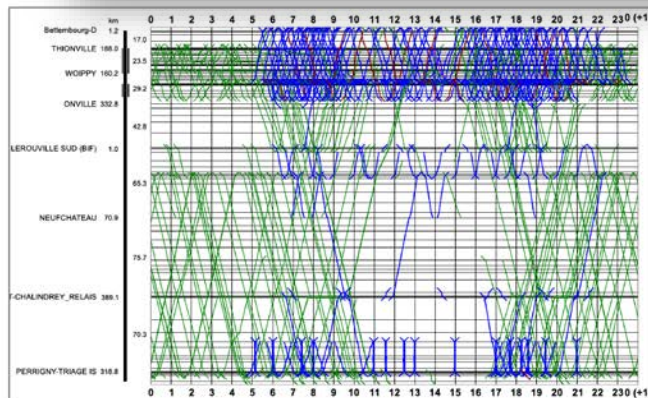
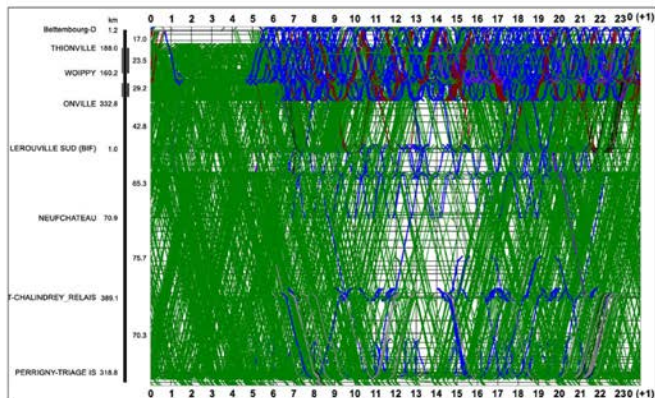
Route
stability

Working paper
Illustration to be
consolidated



365 days planned for 2023
(FR = adaptation, LUX = adapted)

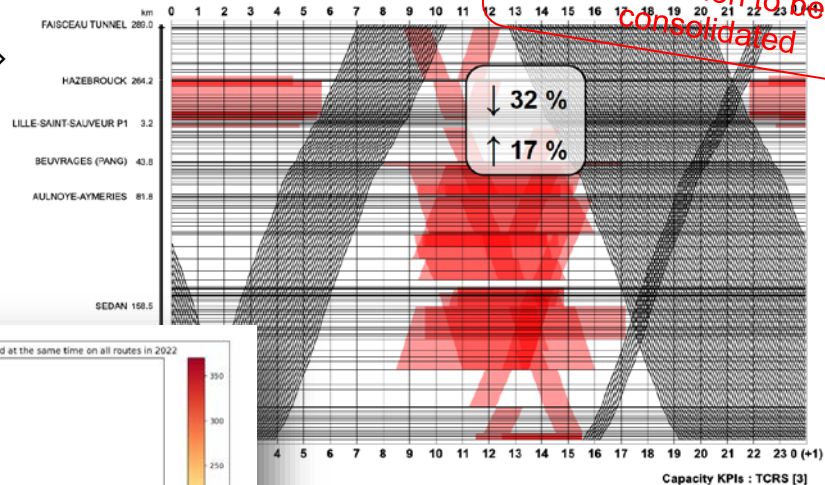
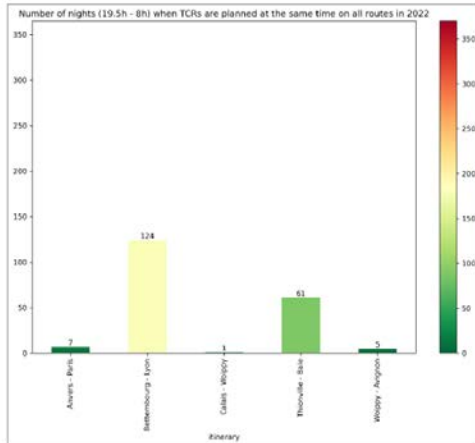
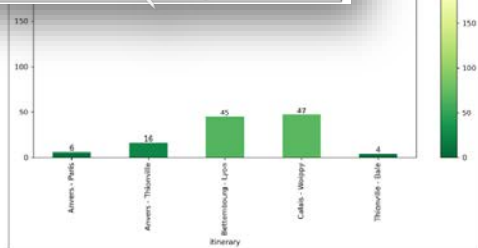
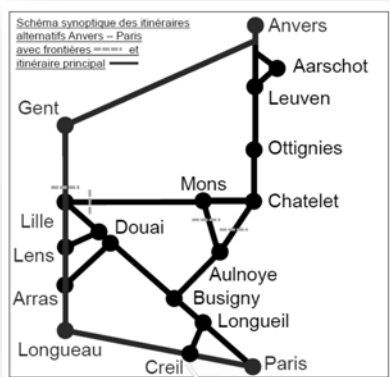
1 d
(FF



Calendar
stability

2.4. Some illustrations of “TCRs issues”

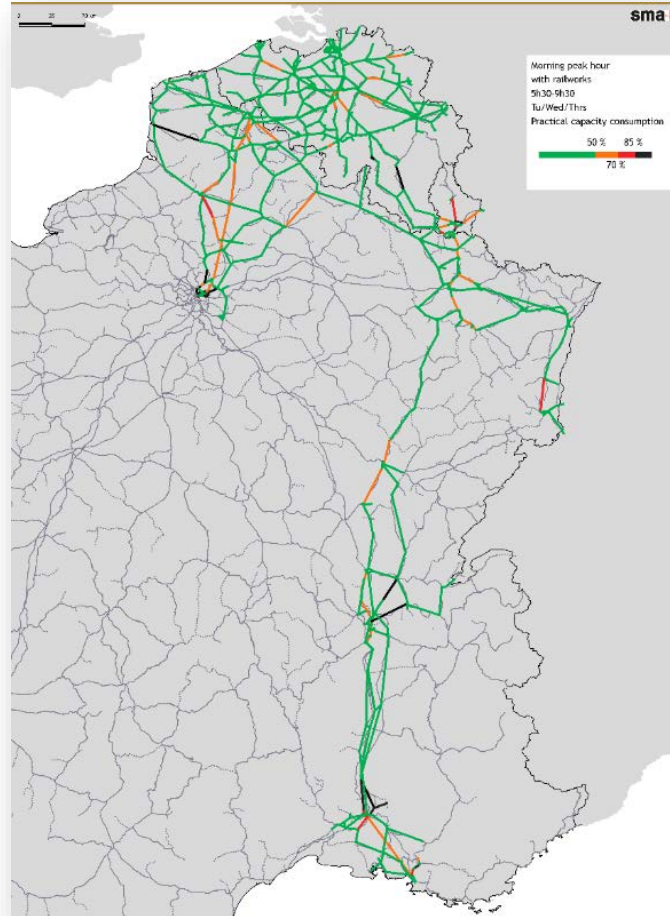
« permeability »



Working paper
Illustration to be
consolidated

Origin - Destination
« opening » via all
possible routes

2.5 Congestion



Working paper
Illustration to be
consolidated

3. Mirror groups



1 IMs groups

11 October 2023



1 RUs group

15 November 2023



1 « institutional »
group

Beginning of Dec. 2023

- ✓ Groups of 10/15 people
- ✓ Purpose : get feedback on KPIs and visualisations

CONTACT

www.rfc-northsea-med.eu

ProRail

INFRABEL

SNCF
RÉSEAU



SBB CFF FFS

TVS
SAS
SAT



ACF

CFL