

What's new on the corridor?

Railway Undertaking Advisory Group
24 September 2018



Co-financed by the European Union
Connecting Europe Facility

easier, faster, safer

What's new on the corridor?

The final offer of timetable 2019 catalogue is published

The screenshot shows the website <https://www.rfc-northsea-med.eu>. The header includes the CORRIDOR logo and a navigation bar with links: ABOUT US, OUR OFFER, ADVISORY GROUPS, CORRIDOR INFORMATION DOCUMENT, CIP, and FORUM. The main content area features a large blue box with the following information:

- 21,5 million KMS of PaP
- + 71% compared to last year
- All harmonised paths at RFC NSM borders are published as PaP
- All available capacity at Roosendaal/Essex and Aubange/Rodange is published as PaP

To the right of this box is a 'News' section with two entries:

- 19/01/2018: Key figures of TT 2019. PaP Catalogue 2019 publication key figures.
- 17/01/2018: Common declaration RFC's NSM-ALT-MED concerning capacity offer.

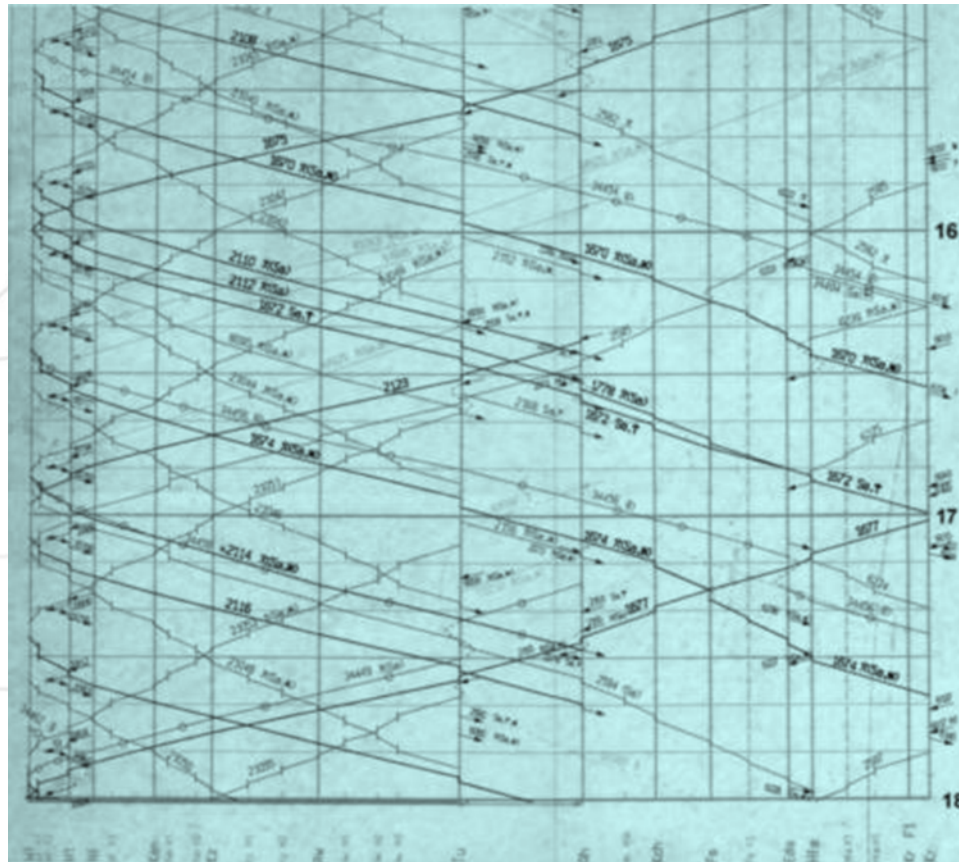
At the bottom of the page is a footer with logos for ProRail, INFRABEL, CFL, SBB CFF FFS, and ACF.

What's new on the corridor?

The International Contingency Management handbook is approved by the sector, and the rerouting overview of RFC NSM is on preparation



the TTR pilot core team decided to implement the rolling planning process for TT2020



SNCF Réseau launches a Coopere working group dedicated on the loading gauge enhancement strategy



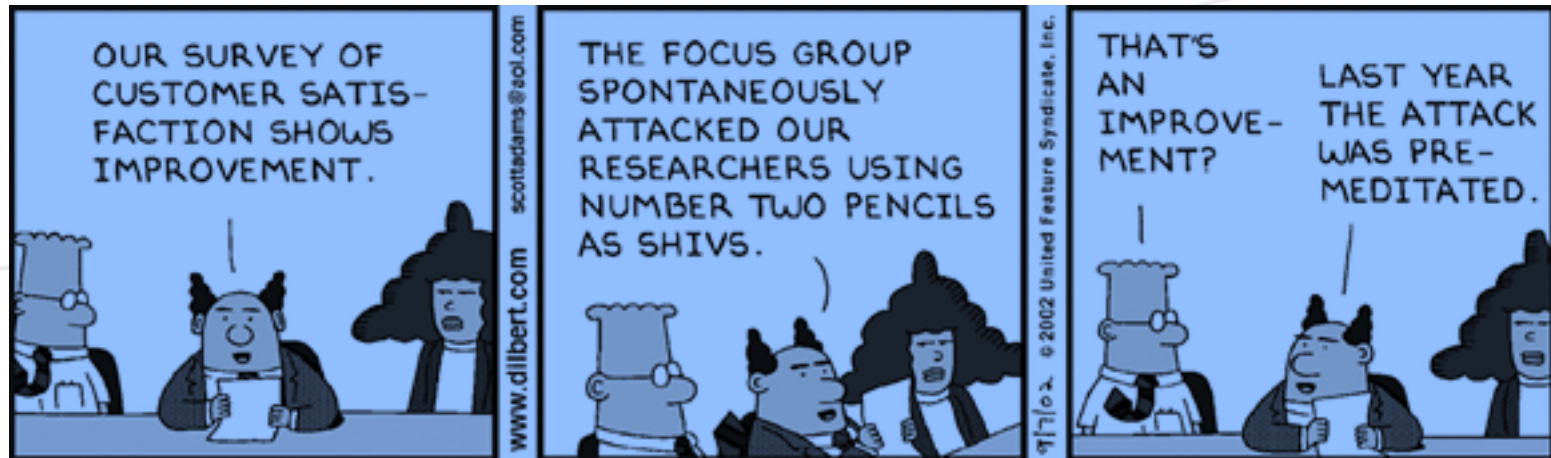
What's new on the corridor?

RFC North Sea - Mediterranean will send end of September a support letter for the investment projects submitted to INEA linked to our lines



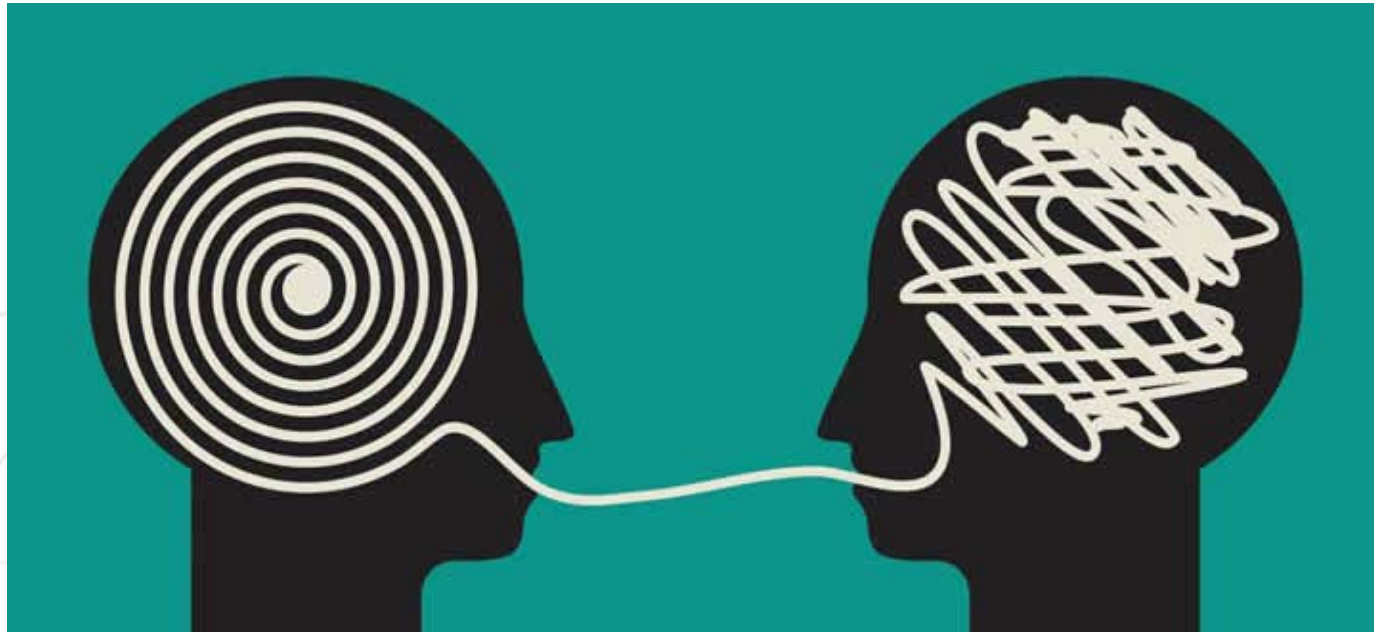
What's new on the corridor?

New campaign for the Customer Satisfaction Survey 2018

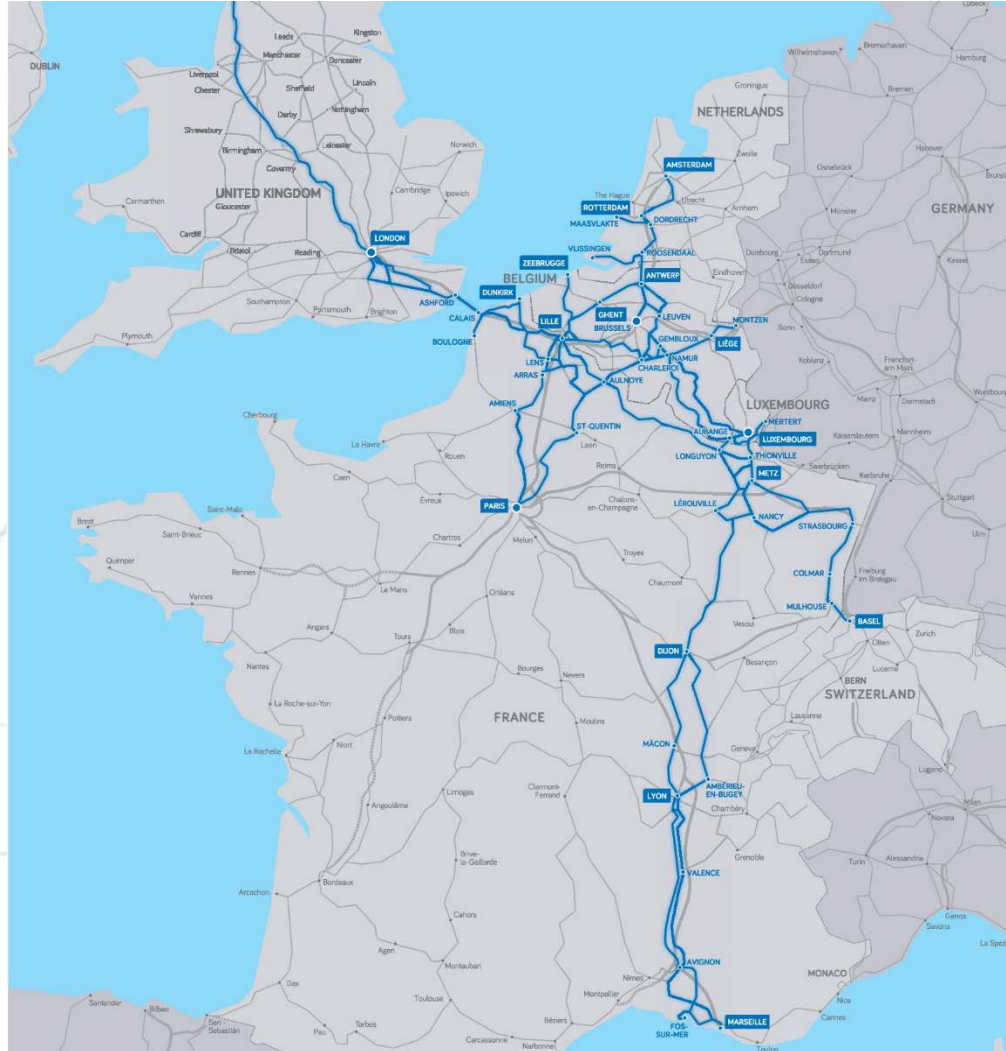


What's new on the corridor?

The delay for B1 language exemptions request between France and Germany is prolonged until December 2018



Michael Dierickx is the new appointed chair of the Assembly of RFC North Sea Med



easier, faster, safer

The sole responsibility of this publication lies with the author.
The European Union is not responsible for any use that may be made of the information contained there in.

Contact

oss@rfc2.eu

www.rfc-northsea-med.eu

ProRail

INFRABEL
Right On Track

NetworkRail

SNCF
RÉSEAU



CFL



ACF

 **SBB CFF FFS**

trasse.ch
trasse | schweiz | ag
sillon | suisse | sa
traccia | svizzera | sa
swiss | train paths | ltd



Co-financed by the European Union
Connecting Europe Facility