

Geographical Information System

Presentation & needs from our Customers
TAG-Meeting Amsterdam, 12th Octobre 2016



Co-financed by the European Union
Connecting Europe Facility

easier, faster, safer

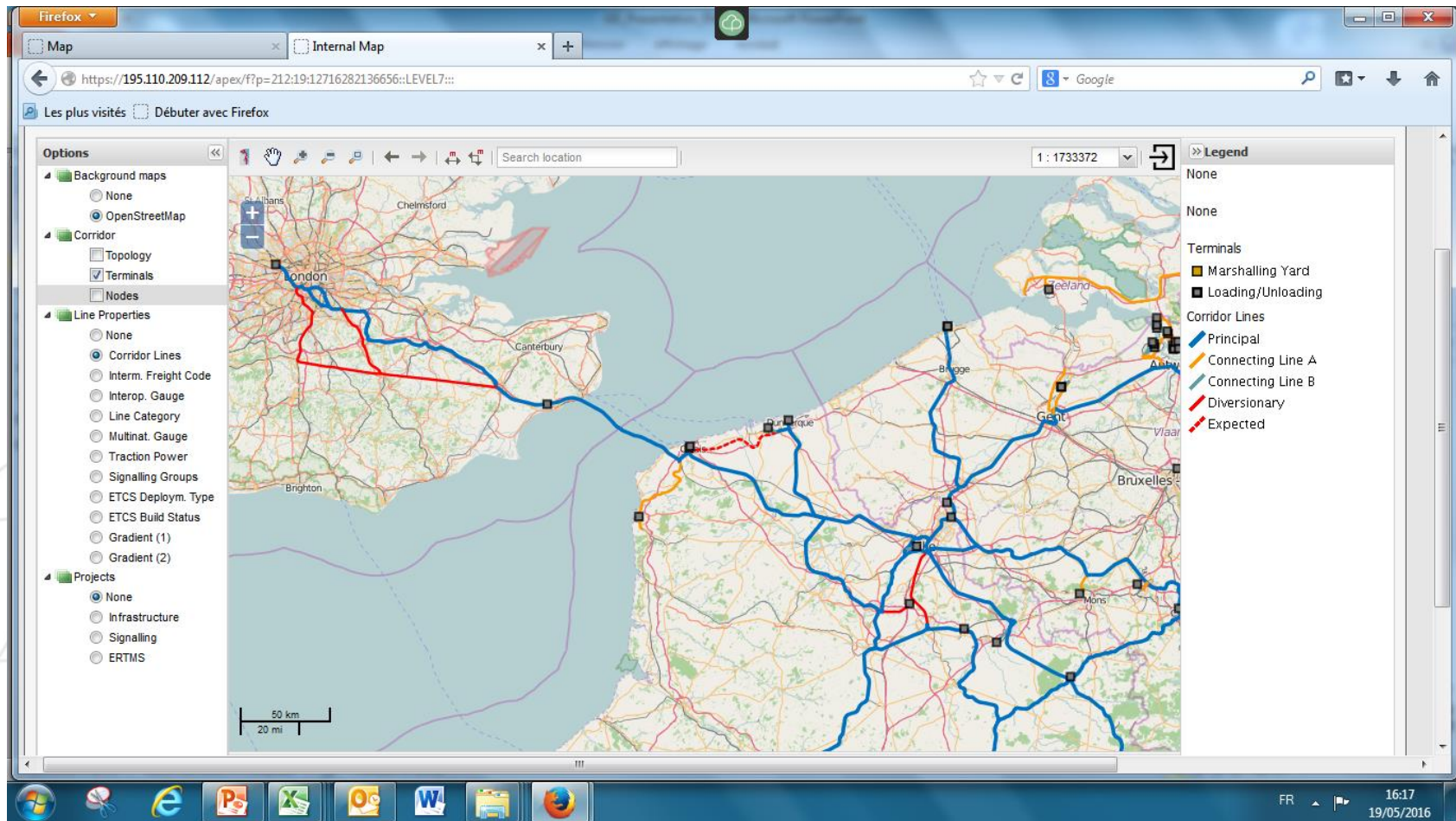
Agenda

1. Presentation of the GIS
2. Presentation of RFL - Portal
3. Roadmap further development
4. Customers expectations & questionnaire

1. GIS: History

- Initiative started by RFC Rhine-Alpine as part of their Customer Information Platform (CIP)
- Coordination and development taken over by RNE in 2015
- Technical development done by supplier 'Fichtner'
- 6 Participating RFCs working on the Roll-out: Rhine-Alpine (1), North Sea-Med (2), ScanMed (3), Atlantic (4), Baltic-Adriatic (5) & North Sea-Baltic (8)

1. GIS: screenshot of an overview



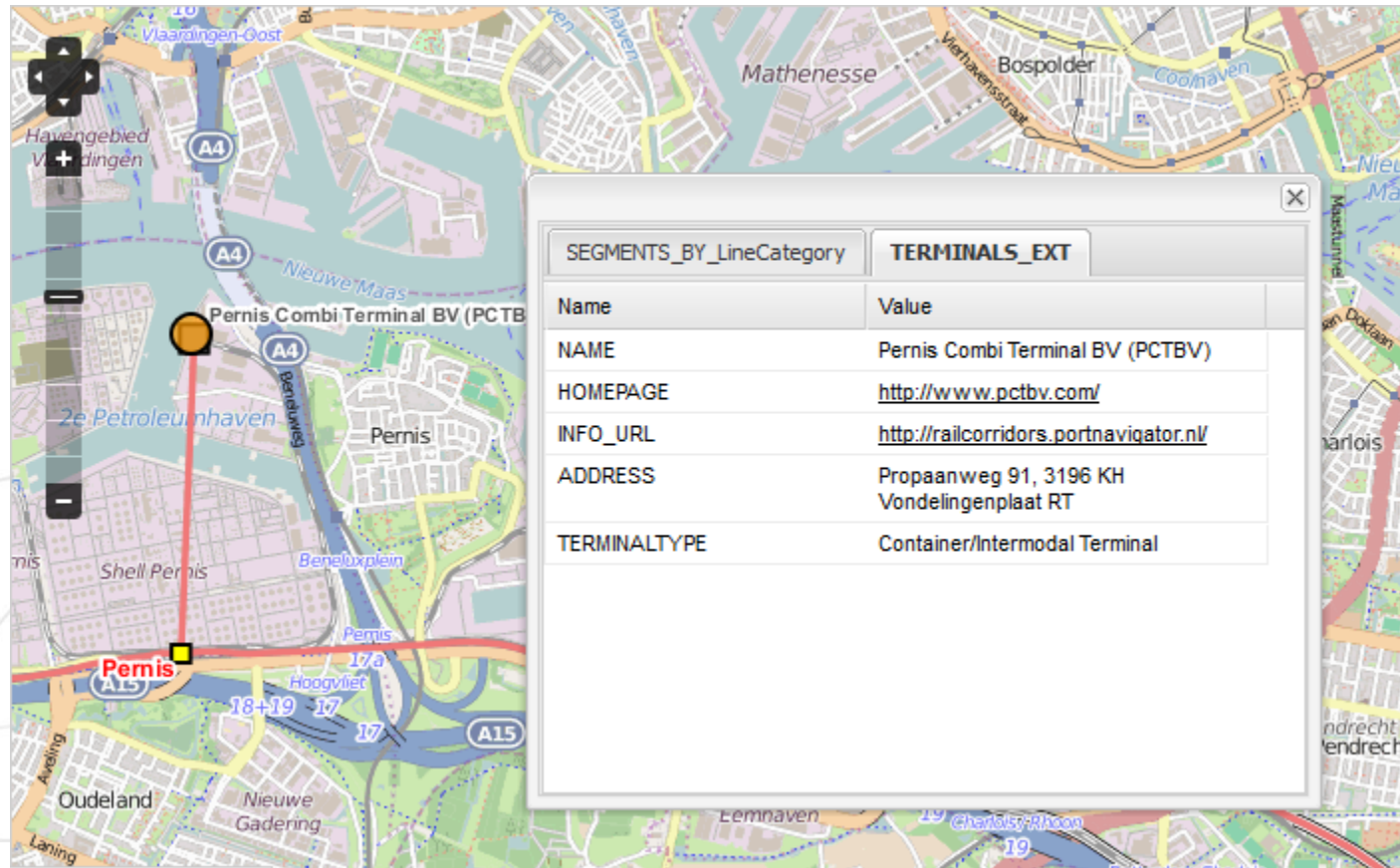
1. GIS: screenshots of a detail

The screenshot shows a web-based GIS application running in a Firefox browser. The map displays a green railway corridor through a landscape with roads (A4, A340, A35) and airports (Aéroport de Dieuze-Gulblange, Camp Lo Hone, Aéroport de Saverne-Strasbourg). A popup window titled "SEGMENTS_BY_SignallingGroup" is open over the map, displaying the following data:

Name	Value
COUNTRY	France
CATEGORY	Diversionary Line
INTERMODAL_FREIGHT_CODE	upon request
INTEROPERATIONAL_GAUGE	GB1
LINE_CATEGORY	D4
MULTINATIONAL_GAUGE	upon request
TRACTION_POWER	25 KV AC
GRADIENT_1	5 - 10
GRADIENT_2	5 - 10
SIGNALLING_GROUP	Class B-System (Legacy)
SIGNALLING	BAL + KVB (FR)

The application interface includes a left sidebar with layers like "Corridor", "Terminals", "Nodes", and "Line Properties". A right sidebar lists "Loading/Unloading" and "Nodes" with their respective symbols. The bottom of the browser window shows the Windows taskbar with various application icons and the system clock displaying 17:40 on 19/05/2016.

1. GIS: screenshots of terminal information



The screenshot shows a GIS application interface. On the left, a map of the Pernis area is displayed, featuring a red line connecting a yellow square on the A15 highway to an orange circle representing the terminal. The map includes labels for 'Pernis Combi Terminal BV (PCTBV)', 'Shell Pernis', and various roads like A4 and A15. On the right, a popup window titled 'TERMINALS_EXT' is open, displaying the following information:

SEGMENTS_BY_LineCategory	TERMINALS_EXT
Name	Value
NAME	Pernis Combi Terminal BV (PCTBV)
HOME PAGE	http://www.pctbv.com/
INFO_URL	http://railcorridors.portnavigator.nl/
ADDRESS	Propaanweg 91, 3196 KH Vondelingenplaat RT
TERMINALTYPE	Container/Intermodal Terminal

1. GIS: Information present in the system

- Terminal Name
- Terminal website
- Terminal Address
- Terminal Type

Important remark: Data input is done by the Corridor, based on the supplied information of the terminals

Agenda

1. Presentation of the GIS
2. Presentation of RFL - Portal
3. Roadmap further development
4. Customers expectations & questionnaire

2. Rail Freight Locations - Portal

- Accessible via following link: <http://www.railfreightlocations.eu/>
- Short presentation by UIRR

Agenda

1. Presentation of the GIS
2. Presentation of RFL - Portal
3. Roadmap further development
4. Customers expectations & questionnaire

3. Proposals roadmap long term development

- Multi-tenancy: have all the corridors on the same screen
- Integration into other RNE tools: e.g. TIS for Terminals
- Link the information of the Terminals from CIP to RFL-Portal

Important remark: These are proposals of further development which have to be approved by the CCB of the CIP-platform

Agenda

1. Presentation of the GIS
2. Presentation of RFL - Portal
3. Roadmap further development
4. Customers expectations & questionnaire

4. Customers' expectations & Questionnaire

Open Discussion:

- Is the GIS a useful tool for you?
- Which information would you like us to add in the GIS?

Questionnaire:

- Based on your first experiences
- Remarks on GUI, performance, end-user experiences
- Suggestions for extra information to be integrated

The sole responsibility of this publication lies with the author.
The European Union is not responsible for any use that may be made of the information contained there in.

Contact

oss@rfc2.eu

www.rfc-northsea-med.eu

ProRail

INFRABEL
Right On Track

NetworkRail

SNCF
RÉSEAU



CFL



ACF

 **SBB CFF FFS**

trasse.ch
trasse | schweiz | ag
sillon | suisse | sa
traccia | svizzera | sa
swiss | train paths | ltd



Co-financed by the European Union
Connecting Europe Facility