

## RFC8 TAG meeting

# THE RAIL FREIGHT LOCATIONS (RFL) PORTAL



Ákos ÉRSEK  
Chief Policy Advisor

# LAST MILE INFRASTRUCTURE – OCCURRENCE IN EUROPE



	Private sidings	Stations with public sidings	Intermodal terminals	Railports / Rail logistic centres
Number of sites in Europe (EU 28+2) <b>Total: ca. 22,120</b>	ca. 15,600	ca. 5,600	ca. 730	ca. 190
Trend for future development	↘	↓	↗	↑
Main rail freight markets	Single wagons / wagon groups Block trains	Single wagons / wagon groups	Intermodal trains	Single wagons / wagon groups
Access for rail freight customers	Mostly not	Yes	Mostly yes	Yes
Restriction for commodities	Depending on owner	Generally no restrictions, only few dedicated commodities (e.g. wood)	Standardised loading units only	Generally no restrictions, affinity to dedicated commodities (e.g. steel, paper)

**Additionally:** Areas with several freight access points, e.g. **Freight villages**, **Inland ports** or **Seaports** with rail connection.

# RAILFREIGHTLOCATIONS.EU (SCREENSHOTS)



OUT ▾

FEEDBACK REGISTER LOG IN

**+**  
**-**

- HERE Normal day grey
- OpenStreetMap
- OpenStreetMap Grey
- HERE Satellite
- Facilities
- OpenRailwayMap

**+ FACILITIES**

**- OPEN RAILWAY MAP**

- Bridge
- Tunnel
- Line ref
- Railroad line
- Siding
- Yard track
- Spur
- Crossover track
- Branch line
- Main line
- Highspeed line
- Industrial line
- Industrial service track
- Preserved track
- Track under construction
- Proposed track
- Disused track
- Razed track
- Tram
- Subway
- Light rail
- Narrow gauge track
- Narrow gauge siding
- Narrow gauge yard
- Narrow gauge spur
- Narrow gauge crossover
- Narrow gauge branch line

Leaflet | Map © 1987-2014 HERE, © OpenStreetMap contributors, Style: CC-BY-SA 2.0 OpenRailwayMap and OpenStreetMap

# RAILFREIGHTLOCATIONS.EU (SCREENSHOTS)



[HOME](#) [SETTINGS](#) [ABOUT](#)

[FEEDBACK](#) [REGISTER](#) [LOG IN](#)

**FACILITY TYPE** ALL NONE

Intermodal terminal

Railport / Rail logistics centre

Station with public siding

Private siding

Other

LESS FILTERS

**AREA TYPE** ALL NONE

Sea port

Inland port

Freight village

Other

**MODE** ALL NONE

Rail

Road

Sea freight

Inland waterways

Other

**RAIL FREIGHT CORRIDOR** ALL NONE

RFC1

RFC2

RFC3

RFC4

RFC5

RFC6

RFC7

RFC8

RFC9

LOADING UNIT

CARGO TYPE

SERVICE

**FACILITY PREVIEW**

Hover above a facility for details.

**FACILITIES**

Name [Operator]
Antwerp Combinant [Combinant NV]
Anwerp Cirkeldijk [IFB]
Anwerp Zomerweg [IFB]
APM Terminal Zeebrugge [APM Terminals Zeebrugge N.V.]
APM Terminals Rotterdam [APM Terminals Rotterdam]
ATO (Associated Terminal Operators) [ATO Antwerp]
Container Handling Zeebrugge (CHZ) [PSA Zeebrugge]
Contargo Karlsruhe Rheinhafen [Contargo Wörth-Karlsruhe GmbH]
Contargo Ludwigshafen Rhein-Neckar [Contargo Rhein-Neckar GmbH]
Contargo Neuss T1 [Contargo Neuss GmbH]

Showing 1 to 10 of 29 entries

PREVIOUS NEXT

**LEGEND**

**FACILITIES**

Facility type colours

- Intermodal terminal
- Railport / Rail logistics centre
- Station with public siding
- Private siding
- Other

Area type symbols

- Sea port
- Inland port
- Freight village

OPEN RAILWAY MAP

# RAILFREIGHTLOCATIONS.EU (SCREENSHOTS)



Search facilities

FACILITY TYPE  ALL NONE

- Intermodal terminal
- Railport / Rail logistics centre
- Station with public siding
- Private siding
- Other

LESS FILTERS

AREA TYPE

MODE  ALL NONE

- Rail
- Road
- Sea freight
- Inland waterways
- Other

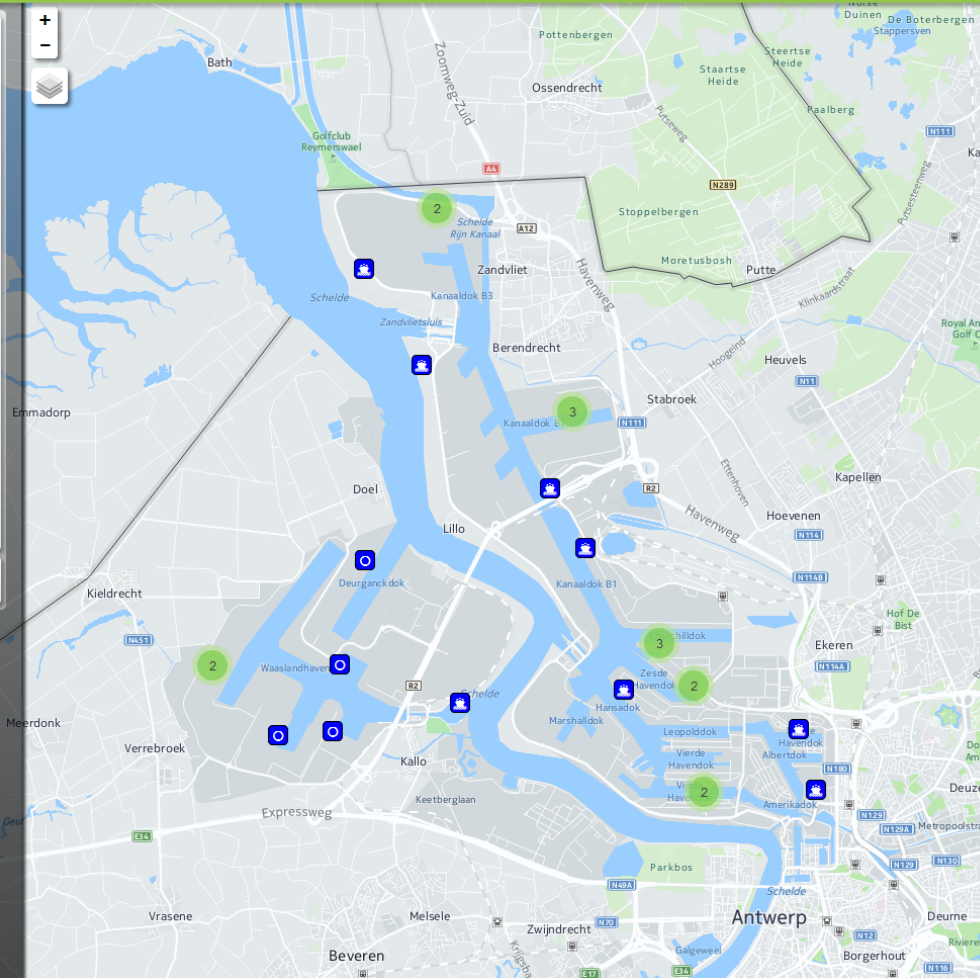
RAIL FREIGHT CORRIDOR

LOADING UNIT

CARGO TYPE

SERVICE

Search map



FACILITY PREVIEW

Hover above a facility for details.

FACILITIES

Name [Operator]
6th Harbour Dock NHS (Kaai 332 - 344) [NHS Nova & Hesse-Noord Natie Stevedoring N.V.]
ABES Terminals [A.B.E.S n.v.]
Ancon [Ancon n.v.]
Antwerp Combinant [Combinant NV]
Antwerp Deurganck Terminal [PSA Antwerp]
Antwerp Euroterminal NV [AET NV]
Antwerp Gateway Terminal [DP World NV]
Antwerp Cirkeldijk [IFB]
Antwerp Zomerweg [IFB]
ATO (Associated Terminal Operators) [ATO Antwerp]

Showing 1 to 10 of 26 entries (filtered from 823 total entries)

PREVIOUS NEXT

LEGEND

FACILITIES

Facility type colours

- Intermodal terminal
- Railport / Rail logistics centre
- Station with public siding
- Private siding
- Other

Area type symbols

- Sea port
- Inland port
- Freight village

OPEN RAILWAY MAP

# RAILFREIGHTLOCATIONS.EU (SCREENSHOTS)



RAILFREIGHT  
LOCATIONS.EU

[HOME](#)
[SETTINGS](#)
[ABOUT](#)

[FEEDBACK](#)
[REGISTER](#)
[LOG IN](#)

Search facilities

**FACILITY TYPE**  ALL NONE

Intermodal terminal

Railport / Rail logistics centre

Station with public siding

Private siding

Other

LESS FILTERS

**AREA TYPE**

**MODE**  ALL NONE

Rail

Road

Sea freight

Inland waterways

Other

**RAIL FREIGHT CORRIDOR**

**LOADING UNIT**

**CARGO TYPE**

**SERVICE**

Search map

**FACILITY PREVIEW**

Hover above a facility for details.

**FACILITIES**

Name [Operator]
6th Harbour Dock Nhs (Kaai 332 - 344) [NHS Nova & Hesse-Noord Natie Stevedoring N.V.]
ABES Terminals [A.B.E.S n.v.]
Ancon [Ancon n.v.]
Antwerp Combinant [Combinant NV]
Antwerp Deurganck Terminal [PSA Antwerp]
Antwerp Euroterminal NV [AET NV]
Antwerp Gateway Terminal [DP World NV]
Antwerp Cirkeldijk [IFB]
Antwerp Zomerweg [IFB]
ATO (Associated Terminal Operators) [ATO Antwerp]

Showing 1 to 10 of 26 entries (filtered from 823 total entries)

**LEGEND**

- FACILITIES
- OPEN RAILWAY MAP
- Bridge
- Tunnel
- Line ref
- Railroad line
- Siding
- Yard track
- Spur
- Crossover track
- Branch line
- Main line
- Highspeed line

# RAILFREIGHTLOCATIONS.EU (SCREENSHOTS)



The screenshot displays the RAILFREIGHTLOCATIONS.EU website interface. A central pop-up window provides detailed information for the 'Europe Terminal' facility. The facility is an intermodal terminal located at Scheldelaan 601, 2040 Antwerp, Belgium. It is operated by PSA Antwerp, with contact information for Olivier Verhaegen (T +32 3 260 62 57, olivier.verhaegen@psa-antwerp.be). The terminal is situated in an inland port/sea port and is used for inland waterways, rail, road, and sea freight. It is currently unknown if it is open for operation.

The background shows a map of the Antwerp region with various rail freight corridors and facilities marked. A legend on the right side of the map identifies different types of infrastructure: Bridge, Tunnel, Line ref, Railroad line, Siding, Yard track, Spur, Crossover track, Branch line, Main line, and Highspeed line.

Facility details from the pop-up window:

BASIC DATA	INFRASTRUCTURE/EQUIPMENT	LOADING UNITS/CARGO TYPES	SERVICES	LINKS
<b>Facility type</b> Intermodal terminal	<b>Opening times</b> No information available	<b>Modes</b> Inland waterways, Rail, Road, Sea freight	<b>Facility located</b> in Inland port, Sea port	<b>Operation status</b> Unknown
<b>Facility address</b> Scheldelaan 601 2040 Antwerp Belgium				
<b>Facility contact data</b> PSA Antwerp Olivier Verhaegen T +32 3 260 62 57 olivier.verhaegen@psa-antwerp.be Website				

## Static information

- CONDITIONS OF ACCESS
- EXTRACT OF MOST IMPORTANT ACCESS CONDITIONS
- DESCRIPTION OF SLOT APPLICATION PROCESS

## Dynamic Information

- SLOT AVAILABILITY INDICATOR (TRAFFIC LIGHT)

## RFC CID-requirements

- GUARANTY OF FULL COMPLIANCE – AND MORE

## Quality assurance, new entries, portal maintenance and operation

- PORTAL HOSTED BY RNE AND MANAGED BY UIRR

## Timeline

- RFL PORTAL PHASE II. EXPECTED COMPLETION BY END 2017





INTERNATIONAL UNION  
FOR ROAD-RAIL  
COMBINED TRANSPORT

# THANK YOU

## For your attention

